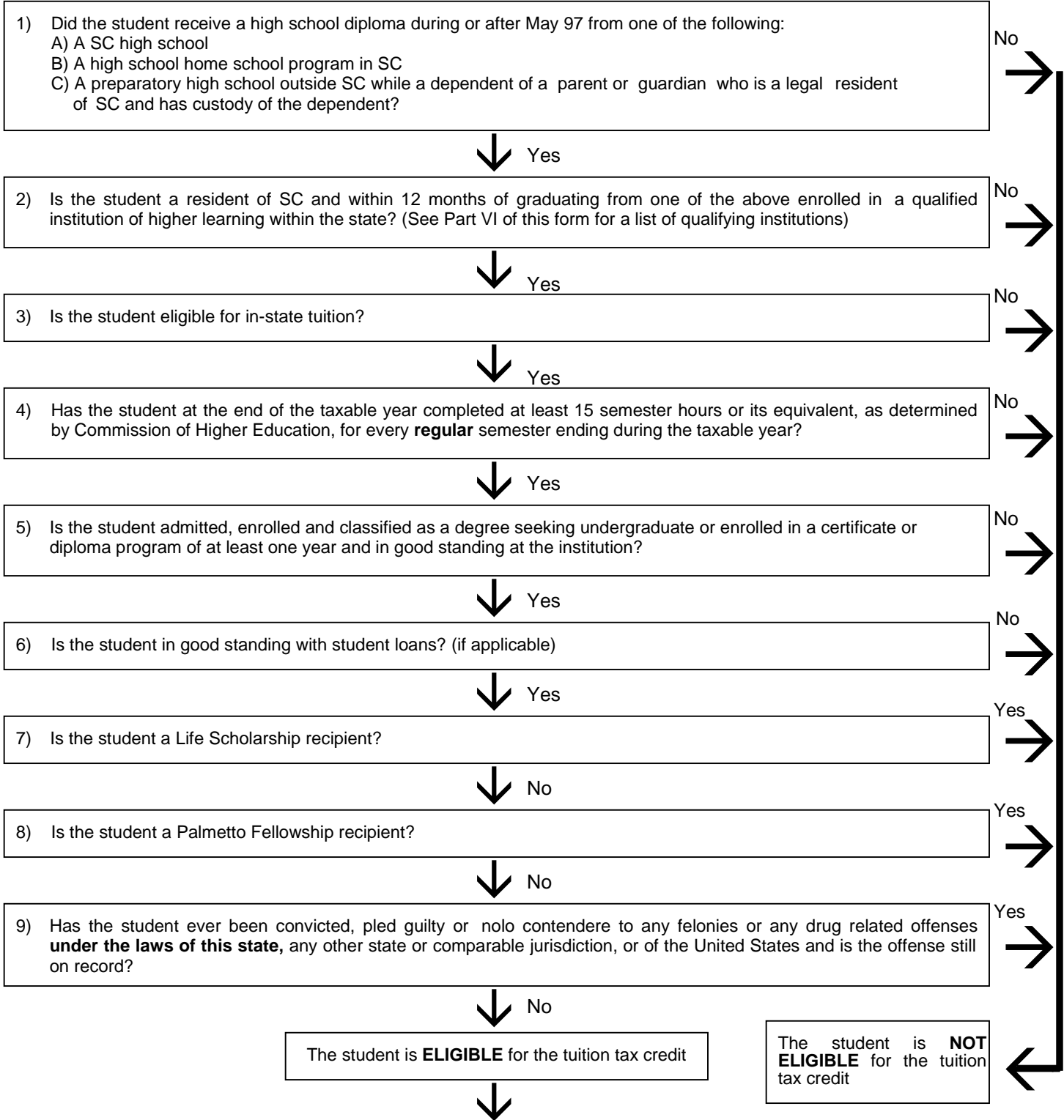




# TUITION TAX CREDIT(S)

NAME OF TAXPAYER	SOCIAL SECURITY NUMBER
------------------	------------------------

## Part I



Complete the back of this form and attach a copy of your federal return.

**Part II Student Information**

Student's First Name and Initial:	Student's Last Name	Student's Social Security Number:
Name of High School:		Month/Year Graduated:
Name of the Qualified Institution in which student was first enrolled:		Month/Year Entered:
Name of Qualified Institution now attending:		Month/Year Entered:

**Part III Complete for a student attending a qualifying four (4) year Institution or College**

	Fall Term	Winter Term	Spring Term	Summer Term	Total
1) Number of semester hours completed during tax year:					
2) Date Tuition paid .....					
3) Amount of Tuition paid to Institution (Total should not exceed \$3454 per year for independent institutions) .....	\$	\$	\$	\$	\$
4) Amount of scholarship grants .....	\$	\$	\$	\$	\$
5) Subtract line 4 from 3 of Total Column .....	\$				
6) Multiply line 5 by 25% (.25) .....	\$				
7) Maximum credit available. ....	\$ <b>850.00</b>				
8) Enter the smaller of 6 or 7 .....	\$				

**Part IV Complete for a student attending a qualifying two (2) year Institution or College**

	Fall Term	Winter Term	Spring Term	Summer Term	Total
1) Number of semester hours completed during tax year:					
2) Date Tuition paid .....					
3) Amount of Tuition paid to Institution.	\$	\$	\$	\$	\$
4) Amount of scholarship grants .....	\$	\$	\$	\$	\$
5) Subtract line 4 from 3 of Total Column .....	\$				
6) Multiply line 5 by 25% (.25) .....	\$				
7) Maximum credit available. ....	\$ <b>350.00</b>				
8) Enter the smaller of 6 or 7 .....	\$				

**Part V Total Credit**

1) Add lines 8 in Part III and IV .....

**Enter this amount on line 20 of SC1040 or Line 15 of SC1040NR (If more than 1 Form is completed, combine totals of Part V and enter on line 20, of SC1040 or line 15 of SC1040NR)**

\$
----

**Part VI Qualifying Institutions**

**4-Year Public Institutions** (Credit - 25% of tuition paid, not to exceed \$850 per tax year)

Citadel, Clemson University, Coastal Carolina University, College of Charleston, Francis Marion University, Lander University, Medical University of SC, South Carolina State University, University of South Carolina, USC of Aiken, USC of Spartanburg, Winthrop University

**4-Year Independent Institutions\*** (Credit - 25% of tuition paid, not to exceed \$850 per tax year)

**\* Tuition expenses are limited to \$3,454 per school year for 4-year independent institutions.**

Allen University, Anderson College, Benedict College, Bob Jones University, Charleston Southern University, Claflin College, Coker College, Columbia College, Columbia International University, Converse College, Erskine College, Furman University, Johnson and Wales, Limestone College, Morris College, Newberry College, North Greenville College, Presbyterian College, Southern Wesleyan College, Voorhees College, Wofford College

**2-Year Institutions** (Credit - 25% of tuition not to exceed \$350 per tax year)

Aiken Technical College, Central Carolina Technical College, Chesterfield-Marlboro Technical College, Denmark Technical College, Florence Darlington Technical College, Greenville Technical College, Horry-Georgetown Technical College, Midlands Technical College, Orangeburg Calhoun Technical College, Piedmont Technical College, Spartanburg Methodist College, Spartanburg Technical College, Technical College of the Lowcountry, Tri-County Technical College, Trident Technical College, USC at Beaufort, USC at Lancaster, USC at Salkehatchie, USC at Sumter, USC at Union, Williamsburg Technical College, York Technical College

**Attach this form and a complete copy of your federal return to your SC1040 or SC1040NR.**